

P R O G R A M M E 1 9 8 8

**HIGH WYCOMBE**  
AND DISTRICT  
**CAMERA CLUB**



*Golden  
Jubilee*  
1938-1988

MEETINGS HELD AT  
HILLTOP COMMUNITY CENTRE  
CREST ROAD, HIGH WYCOMBE



E. F. HARMAN, A.P.A.G.B.  
Hon. Secretary since 1938

## 1938 TO ONE DAY FOR LIFE

On the 19 August 1938, before the dark days of the Second World War, the Bucks Free Press published Mr Ted Harman's letter asking if anyone interested in forming a Camera Club would contact him. On 1 September 1938 the first meeting heralded the start of what was to become a lifetime relationship with Mr Ted Harman and The High Wycombe Camera Club, of which Ted has been secretary for 50 years.

The first Annual Exhibition was held on 7 September 1939, after a very successful year—Adolph Hitler chose the same time to start a war, but the Exhibition was a great success.

Not one to miss a trick, Ted promptly volunteered for the RAF— as a photographer, Ted is still very modest about discussing his early years hidden in a large coach house, that was totally out of bounds to all ranks except the intelligence unit.

Despite his many other photographic commitments, that have included twenty years of teaching photography for the Bucks County Council, and fifteen years at Borstal, under HM Prison Commissioners " in the hope that he might reform a few lads".

Since Ted Harman's 'bright idea', the Club has always been run by the members for the members, with the sole purpose of education and entertaining, above all, it is a Club that moves with the times, whilst promoting the talent and creative expression that is so prevalent in the Club.

Finally, the Club's Golden Jubilee year also coincided with Ted's 80th birthday, so I am sure you'll join me in saying 'Congratulations'— and we all know that 1988 is bound to be a memorable year for him.

Steve Smith  
President

OFFICERS & COMMITTEE

President: Steve Smith ARPS HW 426083

President Elect: Ralph Baker HW 711188

Vice Presidents: \*Past Presidents

A P Biggs	*	E F Harman	APAGB	*
W Biggs ARPS	*	S C Holbrook	FRPS	*
W E Carden	FRPS	E Morton		*
D S Donnison		L A W Rentmore		*
G Duckworth	*	A S A Wooster	ARPS	*
R Goodearl	*			

Secretary: Edward F Harman APAGB  
163 New Rd. High Wycombe 24475

Treasurer: Margaret Rogers  
5 Chilton Close Penn 3406

Programme  
Secretary: Terry Ridgley  
Bourne End 28567

Competition  
Secretary: Brian Ridgley  
High Wycombe 40434

Social  
Secretary: Mike Smith  
High Wycombe 445135

Exhibition  
Secretary: Sue Carey  
High Wycombe 452412

Publicity  
Secretary: Steve Harman  
High Wycombe 37847

Committee: Derek Bryant Jim Watters  
David James

N W Fed.  
Secretary: Ken Keen  
Gerrards Cross 886036

Chilterns  
Secretary: Brian Ridgley  
High Wycombe 40434

Subscriptions: £10, Joint £15, others £3

### Club Rules

1. The Society shall be called the High Wycombe & District Camera Club, and be open to all interested in photography.
2. The objects of the Club shall be the promotion of artistic and technical interest in photography, to stimulate mutual assistance among its members, to encourage and instruct beginners and to help advance the prestige of photography.
3. The Annual Subscription may be reviewed each year by the Executive Committee and any change recommended shall be confirmed by club members and the following AGM. Subscriptions of joint husband and wife, senior citizens & students under 18 shall be paid at reduced rates. Subscriptions due from new members joining after 31 April shall be reduced proportionally at the discretion of the Executive Committee.
4. The financial year shall begin on 1 October when all subscriptions shall be due. Any member whose subscription is unpaid by 1 January shall receive notification from the Treasurer. The Executive Committee reserves the right to terminate membership in the event of a subscription remaining unpaid by 1 February.
5. The Club shall have the power to confer Honorary Life Membership for outstanding service to the Club.
6. The Club shall meet at 7.30 pm on the first, third and fifth Thursdays in each month, or upon other evenings as decided upon by the Executive Committee. Special meetings may be convened on a requisition signed by 5 members, stating the object and sent to the Secretary at least 14 days before the date proposed.

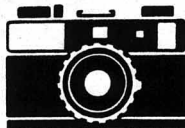
## COMPETITION RULES

### Rules for Print Competitions

1. In Open and Theme competitions there are three classes:- ADVANCE, INTERMEDIATE and NOVICE.
2. In the Open and Theme competitions, Novice prints may be of any size up to 12"x10", in other classes prints may be of any size.
3. Members may submit up to three prints in their class within the Open section, and two prints in Theme section,
4. All Prints in the Intermediate and Advanced sections must be the sole work of the author. Novice prints may be trade processed, but this will be brought to the judges attention.
5. All entries must be identified by class, section, author, title and date of competition.
6. Entries(or duplicates) from previous competitions are not eligible. This also precludes entering a print in both Open and Theme competitions.
7. In each section the judge may, at his/her discretion, award stars up to one third of the total entry, with a maximum of six stars. Certificates will be awarded to the entry thus starred, and they will go forward to the Print Finals competition.
8. All entries must be in by 7.45pm for an 8.00pm start, any prints entered after this time are liable to be refused entry.

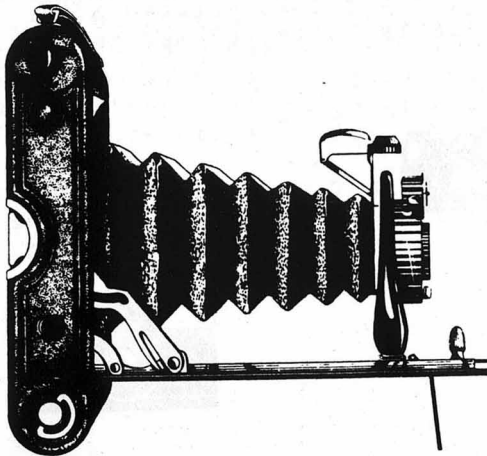
Rules for Slide Competitions

9. There are two classes in the slide competition which will be judged in two classes:- ADVANCED and NOVICE/INTERMEDIATE.
10. Members may submit up to two slides in any competition.
11. All slides submitted must be of a standard mount size, either 2"x2" or 6cm x 6cm. All mounts should have a spot in the bottom left hand corner with the slide facing the right way up for viewing when hand held.
12. All entries must be identified by section, author and date of competition.
13. Entries (or duplicates) from previous competitions are not eligible.
14. The judge may, at his/her discretion, award stars up to one third of the entry, with a maximum of six stars. Certificates will be awarded to the entries thus starred, and will go forward to the Slide Finals.
15. All entries must be in by 7.45pm for 8.00pm start, any slides entered after this time are liable to be refused entry!.



PRINT OF THE YEAR FINALS

16. All starred Theme prints may be entered and will be shown grouped by Theme as well as by class. The judge is told each Theme subject. Certificates will be presented to the winner and the runner-up in each of the three classes. The DESBOROUGH CUP will be presented to the overall winner.
17. All starred Open prints may be entered into Open section. Certificates will be presented to the winner and runner-up in each of these three classes.
18. From all the prints in the Open and Theme sections thus selected, the judge will choose:-
  - a) The overall winner for a PRINT OF THE YEAR award.
  - b) The runner-up receives a Certificate.
  - c) Overall Theme winner receives the DESBOROUGH CUP.
  - d) The runner-up receives a Certificate.
  - e) The overall Best Novice print receives a Trophy.
  - f) The runner-up receives a Certificate.





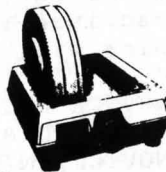
SLIDE OF THE YEAR FINALS

19. All starred slides may be entered, and will be judged as two separate classes, **ADVANCED** and **NOVICE/INTERMEDIATE**.
20. From all the slides in the two classes the judge will choose:-
- a) Best slide of the year which will receive a **SILVER CUP**
  - b) The runner-up will receive a **Certificate**.
  - c) The best novice/intermediate slide will receive a **Trophy**
  - d) The runner-up will receive a **Certificate**.
  - e) The best advanced slide will receive a **Certificate**
  - f) The advanced runner-up slide will receive a **Certificate**

AWARDS IN CONNECTION WITH CLUB COMPETITIONS

- a) Silver Fruit Bowl.....Best Novice Print
- b) Desborough Cup .....Best theme print
- c) Plaque .....Print of the Year
- d) E.F. Harman Cup .....Slide of the Year

**KEENS**



**M. W. KEEN LTD.**

**PHOTOGRAPHIC & HI-FI SPECIALISTS**

**PAULS ROW (just behind the Guildhall)**

**HIGH WYCOMBE**

**Tel: HIGH WYCOMBE 25691**



PRINT & SLIDE LEAGUES

21. The Print League will be run as three separate classes NOVICE, INTERMEDIATE and ADVANCED.
22. The Slide Leagues will be run as two separate classes NOVICE/INTERMEDIATE and ADVANCED.
23. The stars awarded to the prints and slides detailed in Rules No. 7 & 14 will be awarded in order of preference. Each star has a points value, which will count towards the leagues. The lowest placed star in each section is always worth 2 points, and each star above it is worth an additional point, i.e. if 4 stars given

1st Star.....	5 pts.
2nd Star.....	4 pts.
3rd Star.....	3 pts.
4th Star.....	2 pts.

In addition to the points awarded for stars, if any author has entered a section and has not been awarded a star, a point will be given for each section entered.

24. In each class the author with the most points will be the winner, and will be presented with an inscribed shield which can be kept. The following will be presented:-

NOVICE PRINT LEAGUE WINNER  
INTERMEDIATE PRINT LEAGUE WINNER  
NOVICE/INTER. SLIDE LEAGUE WINNER  
ADVANCED SLIDE LEAGUE WINNER

All runners-up will receive a Certificate.

### GRADING

Past photographic experience and performance is the guide to grading. New members enter as Novices, or if they wish to compete in a higher class they may seek grading by discussing a small selection of their work with senior club members.

The competition system of star awards in Club competitions and the Annual Exhibition allow evaluation of member's work throughout the year by a group of leading photographers in the Club. When Novice and Intermediate workers show by their work that they are ready to face stronger competition, they are upgraded. Upgrading will be effective from the start of the Club year.



### YOUTH AWARD

The MAY ANNIE YOUTH TROPHY is presented annually to the young photographer whose work is considered by the Committee to have progressed most during the year.

### HISTORY

On 19 August 1938 the Bucks Free Press published a letter from Mr E Harman, in which he asked anyone interested in forming a Camera Club in the town, to contact him.

About twenty people did just that, and a fortnight later, on 1 September 1938, the first meeting of The High Wycombe & District Camera Club was held.

Today club activities embrace all types of photography, monochrome and colour prints, transparencies (slides) and audio-visual sequences.

### ACTIVITIES

The Club meets on most Thursday evenings at 7.30pm for 8.00pm.

Some meetings involve 'in-house' competitions judged by visiting experts, for prints or slides, at other Club meetings members benefit from talks (often illustrated), again given by eminent photographers.

The club has occasional outings to places of photographic interest. Annually there is an Exhibition of member's best work over the previous 12 months, which runs for one week and is open to the public. Last but not least there is the Annual Dinner.

The AGM is held in October.

ANNUAL EXHIBITION RULES - PRINTS.

Entries not complying with the Rules will not be eligible for judging, but at the discretion of the Committee may be displayed.

1. Prints will be judged in three classes:-

ADVANCED            INTERMEDIATE            NOVICE

and in the following sections:-

Pictorial- Architectural- Technical & Record  
(other than Architectural)-- Portrait-  
Wildlife- Action.

2. Authors must specify in which section the print is entered. If no information is available it will be treated as Pictorial.
3. A member may enter up to 8 prints. Any one print can only be entered into any one section. All 8 prints entered may be in the same section or in a mixture of several sections as decided by the author.
4. All prints must be mounted.

Advanced and Intermediate class prints must be no larger than 20"x 16" with maximum mount size 24"x 20".

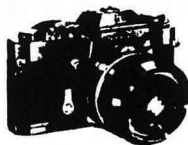
Novice class prints must be no larger than 12"x 10" with maximum mount size 15"x 12".

5. With the exception of mounting, all prints must be the sole work of the entrant.

6. A member may have part, or all of his print entry hung as a single panel. The panel size is 6ft. wide x 4ft. deep. Panel entries must be indicated as such at the time of entering, with a diagram of any particular lay-out required. A member entering a panel may not enter more than 2 non-panel prints. Panel headings to be provided by the author and included with the prints and lay-out submitted.
7. All prints must be numbered and titled etc., using the labels provided to correspond with the entry form. No Title' is not acceptable.
8. All prints must be no more than 3 years old, and any print having been accepted for a previous Annual Exhibition cannot be entered into the current one.
9. The Selection Committee reserves the right to reject any entry not up to the standard of its class, not conforming to the Rules, or unsuitable in any way, and also reserves the right to re-arrange any panel lay-out or the presentation in any way it may deem necessary.

# HUGHES

*Photographic and  
Hi-Fi Specialists*



Agents for

CANON, OLYMPUS, YASHICA,  
TAMRON, SONY, HITACHI & TRIO

7 HIGH STREET, HIGH WYCOMBE  
Tel 30138

10. The following awards may be made:-

The Cyril Pratchett Cup	Best Print
The Novice Cup	" Novice Print
The Eric Rowe Cup	" Intermediate Print
The Goodearl Cup	" Pictorial Print
The Seymour Cup	" Portrait Print
The Percy Thomson Trophy	" Architectural Print
The W H Carden Cup	" Record or Technical Print

(other than Architectural)

The Margaret Beer Print Trophy	" Wildlife Print
The Bert Stroud Award	" Panel of Prints
The Laurie Stevens Trophy	" Action Print

Any entry is eligible to win more than one award.

11. The Exhibition is for Club members only, and entries will only be accepted from authors who who have paid their current year's subscription.
12. All reasonable care will be taken of prints entered for the Exhibition, but the Club accepts no responsibility for damage or loss, however caused.
13. Entries must be handed in as per the details on the attached separate sheet.



ANNUAL EXHIBITION RULES- SLIDES.

Entries not complying with the Rules will not be eligible for judging but, at the discretion of the Committee, may be displayed.

1. Slides will be judged in two classes:-

Novice/Intermediate  
Advanced

2. Members who wish their slides to be judged for Wildlife must specify so on the entry form.
3. Each member may enter up to 10 slides in monochrome or colour, or a mixture of both.
4. Slides will be accepted in both 2"x 2" and 2 3/4"x 2 3/4" mount sizes.

Slides must be mounted and correctly spotted for projection i.e. in the bottom left hand corner when hand held, and viewed as taken.

5. Slides may be home or trade processed. Judging of slides will be by projection.
6. Slides must be no more than 3 years old, and must be numbered and titled to correspond with the entry form, must include the author. 'No Title' is not acceptable.
7. Any slide having been accepted for a previous Annual Exhibition cannot be entered in the current one.
8. The Selection Committee reserves the right to reject any entry not up to the standard of its Class, not conforming to the Rules or is unsuitable in any way.



9. The following awards may be made:-

The Castle Cup	Best Advanced Slide
The Len Rentmore Cup	" Novice/Intermediate Slide
The Jack Wilson Cup	" Slide
Slide Trophy	" Wildlife Slide

Any entry is eligible to win more than one award.

10. The Exhibition is for Club members only, and entries will only be accepted from authors who have paid their current year's subscription.
11. All reasonable care will be taken of slides entered for the Exhibition, but the Club accepts no responsibility for damage or loss however caused.
12. Entries must be handed in as per the details on the appropriate entry form.

# CRENDON HOUSE

ESTATE AGENTS  
MORTGAGE CONSULTANTS  
SURVEYORS  
VALUERS

OFFICES AT

9 CRENDON ST. HIGH WYCOMBE  
BUCKS HP13 6LE ☎ (0494)26313

AND

32 STATION ROAD, CHINNOR, OXON.  
OX9 4PZ ☎ (0844)53573

ASSOCIATED OFFICE IN MIDDLESEX

## AFFILIATIONS

### THE PHOTOGRAPHIC ALLIANCE

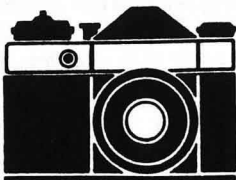
The Photographic Alliance of Great Britain (known as the PAGB) is a parent organisation which links together Photographic Clubs and Societies to form a united group, and which provides advice and assistance in the running of Clubs all over the UK

As the number of Clubs is so large, one organisation could not cope, so the PAGB is broken down into smaller, but still large photographic areas. Our Club falls within two of these areas:

- 1) THE CENTRAL ASSOCIATION OF PHOTOGRAPHIC SOCIETIES
- 2) THE CHILTERN ASSOCIATION OF CAMERA CLUBS.

Both of these associations have an executive committee, which works to help and service clubs within their areas. Both provide a register of critics, judges and lecturers and also organise lectures, workshops and seminars etc.

The CA issues a quarterly Bulletin of news and information, and holds an Annual Exhibition which HWDC have a long standing tradition in supporting.



The CACC also holds an Annual Exhibition known as the ROSE BOWL FINALS which consists of the following competitions:

- 1) Audio Visual Contest
- 2) Best Panel of Prints by a club
- 3) Best Print from all the Panels
- 4) Best Print by a Beginner (under 25)
- 5) The Best Slide of the Year
- 6) The Rose Bowl Inter-Club Competition



We can offer you the largest display of photographic equipment and materials that you will ever see under one roof. All the leading names in photography at EFC discount prices.

CAMERAS AND ACCESSORIES - DARKROOM EQUIPMENT - STUDIO LIGHTING - VIDEO CAMERAS - FILM AND DARKROOM MATERIALS - PROJECTION AND AV EQUIPMENT - SECONDHAND AND TRADE-IN DEPARTMENT - A FULL RANGE OF PROCESSING SERVICES INCLUDING TRANSFER OF SLIDE AND FILM TO VIDEO.

All this and a lot more available to you at EFC. With over 10,000 square feet photographic goods on display your visit will be well worth while. Call us today for a quote on your requirements.

**EURO FOTO CENTRE**  
High Road, Cowley,  
Uxbridge, Middlesex. UB8 2LR  
Telephone: (0895) 448224

THE FEDERATION OF NORTH WEST LONDON

PHOTOGRAPHIC SOCIETIES

This group was formed in 1959 to organise competitions, and other activities between member clubs. High Wycombe has been a member since 1971, and has won the Final 4 times.

The slide/print battles with other clubs are divided into four groups each with three or four clubs in each group. Each club selects 16 slides and 16 prints to be used in either 3 or 4 heats against the clubs in our group. The entries are marked out of 10 by a judge chosen by the Federation, and the club with the most points qualifies for the Semi-Finals.

Similarly the winner of the Semi-Final goes through to the Final.

During the qualifying rounds the prints and slides which have been awarded a star, go into the Final for the best slide and print of the year, for which the winners receive awards.

